

COMPANY PROFILE

EPC CONTRACTOR

**ENGINEERING | SUPPLY | INSTALLATION | TESTING
COMMISSIONING | MAINTENANCE | FABRICATION
SHIP REPAIRING | CIVIL CONSTRUCTION**

ABOUT OUR COMPANY

The year was 2003, where there is scarcity of local service provides for the installation of high-voltage grid substations. At the time, all high-voltage substation contractors were foreign nationals.

The contractors had to bring skilled manpower for erection purposes from other countries. Mr. W N Ranjith, an entrepreneur, started New Royal Electricals (Pvt) Ltd in 2003 to cater skilled manpower to high voltage substation contractors.

Providing only installation services for HV substation was not sufficient for the sustainability of the company, since HV substation comes from time to time. As an entrepreneur, he had to switch for other electrical projects too. Medium voltage installations, low voltage installations, industrial automation, and maintenance services are few other areas he targeted.

High flexibility, availability of highly skilled manpower, and commitment to clients are few of key factors of success. New Royal Electrical is still the first choice of both foreign and local contractors for electrical installation work.



In 2009, New Royal Electricals (Pvt) Ltd started its operation to cater booming renewable energy sector, as a trading arm for NRE GROUP. NRE GROUP consists of New Royal Electrical and New Royal Electrical (Pvt) Ltd.

At present, 350+ employees are working under NRE GROUP umbrella. Safety is our culture, and quality is a standard for all of our executions.

NRE is proud to mention that it obtained three prestigious international certificates in a single go in the year 2018. This revised system manual addresses the changes it has taken to upgrade its OHS certificate to ISO 45001: 2018.

Vision

To be the leader in the field of electrical installations in energy sector, Infrastructure development sector and industry.

Mission

To be the preferred electrical contractor maintaining the highest standard of quality, safety, leadership and performances to our clients by the way of our continuous developments with preserving environment.

OUR CORPORATE VALUES

- » Safety first.
- » Never compromise quality of works.
- » Make work enjoyable, recognition and rewarding.
- » Maintain higher customer satisfaction.
- » Be a friend of the environment.



NEW ROYAL ELECTRICAL GROUP

WHY NRE ?

- QUALITY IS A STANDARD
- SAFETY IS OUR CULTURE
- COMMITTED TO CLIENTS
- HIGH COMPETENCY LEVEL
- HIGH FLEXIBILITY

NRE IS A LEADER IN ELECTRICAL AND AUTOMATION SECTORS, AND IS DEDICATED TO PROVIDING THE INDUSTRY'S MOST SKILLED CRAFTSMANSHIP, IMPECCABLE PERFORMANCE, AND COMPETITIVE PRICING TO OUR CLIENTS.

NRE IS PROUD TO MENTION THAT IT HAS OBTAINED THREE PRESTIGIOUS INTERNATIONAL CERTIFICATES IN A SINGLE GO IN THE YEAR 2018 THIS REVISED SYSTEM MANUAL ADDRESSES THE CHANGES IT HAS TAKEN TO UPGRADE ITS OHS CERTIFICATE TO ISO 45001: 2018.

QUALITY ASSURANCE

AT NEW ROYAL GROUP, QUALITY IS STANDARD. WE ARE COMMITTED TO THE EFFICIENT DELIVERY OF QUALITY ACROSS THE SECTORS WE SERVE. OUR QUALITY ASSURANCE PRACTICES ENSURE OUR CUSTOMERS, THE JOB PERFORMED BY THE NRE IS AT ITS BEST. ALL EMPLOYEES OF NRE GROUP ARE AWARE OF THE COMPANY'S QUALITY POLICY TO MAINTAIN QUALITY STANDARDS EVERYWHERE.

AFFILIATIONS & REGISTRATIONS

The image displays three ISO certificates issued by Sri Lanka Standards Institution (SLSI) to New Royal Electricals (PVT) LTD. The certificates are for ISO 9001:2015 (Quality Management System), ISO 14001:2015 (Environmental Management System), and ISO 45001:2018 (Occupational Health and Safety Management System). Each certificate includes the company name, address, and the scope of certification.

COVER OF CONTRACTORS RECORD BOOK (CIDA C3) MAIN CONSTRUCTION CONTRACTORS. Issued by the Construction Industry Development Authority (CIDA), Colombo 07.

CIDA C3

COVER OF CONTRACTORS RECORD BOOK (CIDA EM1) SPECIALIST CONSTRUCTION CONTRACTORS. Issued by the Construction Industry Development Authority (CIDA), Colombo 07.

CIDA EM1

COVER OF CONTRACTORS RECORD BOOK (CIDA GP-B4) NATIONAL REGISTRATION AND GRADING OF CONSTRUCTION CONTRACTORS. Issued by the Construction Industry Development Authority (CIDA), Colombo 07.

CIDA GP-B4

SECTORS WE SERVE

HIGH VOLTAGE

NRE is a leader in installation 220/132/33 kV Grid Substations, both indoor and outdoor. Highly skilled engineers, technicians and availability of tools and machinery being our main strengths. We are one of preferred installer among the substation construction community.

MEDIUM VOLTAGE

NRE undertakes turnkey medium voltage systems from conceptualization to commissioning by providing cutting-edge technology across the industry which are tailored to the need of customers. In housed skill, competency, tools and machinery lead, achieve beyond expectations of our clients.

LOW VOLTAGE

NRE undertakes turnkey low voltage systems from conceptualization to commissioning by providing latest technology to our clients. Manufacturing plants, high rise commercial and apartment buildings have been our main focusing sectors, where high competency levels and timely delivery is required.

EXTRA LOW VOLTAGE

Installation of Building Management Systems (BMS), CCTV systems, MATV Systems, PA Systems, DATA networks, fire protection systems, fire detection systems, access control Systems, energy monitoring systems and instrumentation systems are our main focus areas in the industry.

HYDRO POWER PLANTS

NRE has the competency and capability of total supply, erection, testing and commissioning of electro mechanical systems for mini-hydro power plants.

WIND POWER PLANTS

NRE is one of the preferred service providers for supply, installation, testing and commissioning of electrical system on wind power plants.

SOLAR POWER PLANTS

We are one of the leading solution providers for solar net metering systems. We undertake all kinds of supply and installation work related to solar electricity power generating systems.

SHIP BUILDING INDUSTRY

NER undertake ship repairing, ship electrical and instrumentation systems installation and maintenance and also total electrical system installer for new ship buildings.

SECTORS WE SERVE continued

OVERHEAD TRANSMISSION LINES

We are one of the preferred installers for 220/132/33 kV transmission lines in erection of towers, cable stringing, cable termination and jointing.

UNDERGROUND CABLE LAYING AND TERMINATION

NRE undertake both underground and over-ground cable laying and termination work, including supply in any voltage level. Highly skilled and competence cable jointers are our main strength. Our qualified engineers designs systems for newest IET/IEEE standards.

MAINTENANCE & SERVICES

We are providing annual maintenance services for power transformers, HT panels, LT panels, cables, and protection systems. Transformers oil filtration, oil BDV testing, insulation testing, protection relay testing, rust removing and painting are few of services we carry out.

EARTHING & LIGHTENING PROTECTION SYSTEM

NRE is one of the leading earthing and lightning protection system installers in Sri Lanka for factories, commercial and apartment buildings, communication towers, water towers, etc...

FABRICATIONS

NRE is the preferred fabricator for all kinds of fabrication work including cable gantries, transmission towers, base frames, ladders and various types of customized brackets, etc...

INDUSTRIAL LIGHTING

We offer innovative lighting solutions that begin from conceptualization, design, supply, installation, testing and commissioning that cover industrial, commercial and roads.

POWER GENERATION

We offer diesel powered generators for temporary power needs of our clients.

CONVERTED CONTAINERS

Our customized converted containers for offices and storage facilities are widely accepted in the industry for making temporary operation facilities. We have both AC and Non-AC, and storage cabins for our clients.

CIVIL CONSTRUCTION

NRE provides a multi-disciplinary design and building service to complement us wide range of construction and consultancy services. Delivering end-to-end building and civil engineering services across every major sector.

COMPLETED PROJECTS

220/132/33kV Grid Substation Erection & Civil Works at Kappalthurai

Scope Of Work:

ERECTION WORKS

- 245kV double busbar system (outdoor)
- 2 Nos. 245kV Line bays (outdoor)
- 1 No. 245kV Bus Coupler (outdoor)
- 2 No. 245kV Transformer bays (outdoor)
- 2 No. 36kV Transformer bays (outdoor)
- 02 Nos. 36kV Auxiliary Transformer Bays (outdoor)
- 02 Nos. 36kV Earthing Transformer Bays (outdoor)
- 14 Nos. 36kV Feeder bays (outdoor)
- 2 Nos. 36kV Generator Feeder bays (outdoor)
- 2 Nos. 36kV Transformer bays (indoor GIS)
- 14 Nos. 36kV Line feeder (indoor GIS)
- 2 Nos. 36kV Generator Feeder bays (indoor GIS)
- 1 No. 36kV Bus Section (indoor GIS)
- 2x 220(132)/33kV Main transformer 63 MVA
- 2x 33kV AUX. Transformer
- 2x 33kV Earthing Transformer
- 25kVA Diesel Generator
- 36kV power cables and outdoor terminations
- Lightning Protection
- Protection, Metering, Monitoring And Control
- LVAC Switch Boards
- Batteries, Chargers, Distribution Boards And Inverter Equipment

CIVIL WORKS



Augmentation of 132/33kV Grid Substations at New Anuradhapura

Scope Of Work:

OUTDOOR SWITCHGEAR

- 145kV Double busbar system
- 2 Nos. 145kV Line bays for Puttalam
- 2 Nos. 145kV Line bays for Habarana
- Protection, Metering, Monitoring, And Control
- Communication Equipment
- Substation Earthing
- Lightning Protection System



132/33kV Grid Substation at Old Anuradhapura

Scope Of Work:

Outdoor SWITCHGEAR

- 145kV Single busbar system
- 2 Nos. 145kV Line bays for New Anuradhapura
- 1 No. 145kV Bus Section bay
- 3 Nos. 145kV Transformer bay
- 3 Nos. 36kV Transformer bays
- 9 Nos. 36kV Line Feeder bays
- 3 Nos. 36kV Generator Feeder bays
- LVAC Switch Boards
- Batteries, Chargers, Distribution Boards & Inverter Equipment
- Protection, Metering, Monitoring, And Control
- Power And Control Cables
- Communication Equipment
- Substation Earthing
- 3X 132/33kV Main Transformer 31.5Mva
- 3 X 33kV Zigzag Earthing Transformer 800A, 30 Sec

INDOOR SWITCHGEAR

- 3 Nos. 36kV Transformer bays
- 9 Nos. 36kV Line feeder bays
- 3 Nos. 36kV Generator Feeder bays
- 2 Nos. 36kV Bus Section bays
- 3 X 33/0.4kV Delta Star Auxiliary Transformer 160kVa
- Supporting Structures Including Gantries



220/132/33kV CEB AIS Substations at Trincomalee

Scope Of Work:

ERECTION WORKS

- 145kV Single busbar system
- 2 Nos. 145kV Line bays
- 1 No. 145kV Bus Section Bay
- 2 No. Transformer Bays
- LVAC SWITCH BOARD
- Batteries, Chargers, Distribution Boards and Inverter Equipment
- Protection, Monitoring, Metering, And Control
- Power And Control Cables
- Diesel Generator
- Lightning Protection System
- Modification Substation Earthing
- Communication Equipment And Scada Gateways

Augmentation of 132/33kV Grid Substations at Kalutara

Scope Of Work:

- 145kV Single busbar system
- 2 Nos. 145kV Line bays for Pannipitiya and Matugama
- 1 No. 145kV Bus Section Bay
- 2 Nos. 145kV Transformer Bay
- 2 Nos. 36kV Transformer bays
- 6 Nos. 36kV Line Feeder bays
- 2 Nos. 36kV Generator Feeder bays
- INDOOR SWITCHGEAR
- 2 Nos. 36kV Transformer bays
- 6 Nos. 36kV Line feeder bays
- 2 Nos. 36kV Generator Feeder bays
- 1 No. 36kV Bus Section Bay
- LVAC Switch Boards



220/132/33kV CEB AIS Substations at Katunayake

Scope Of Work:

ERECTION WORKS

- 1 No. 145kV Transformer bays (outdoor)
- 1 No. 36kV Transformer (outdoor)
- 3 Nos. 36kV Feeder bays (outdoor)
- 1 Nos. 36kV Generator Feeder bays (outdoor)
- 1 No. 36kV Earthing Transformer (outdoor)
- 1 Nos. 36kV Transformer bays (indoor GIS)
- 5 Nos. 36kV Line feeder bays
- 1 Nos. 36kV Generator Feeder bays
- 2 No. 36kV Bus Section Bay with Busduct
- Protection, Monitoring, Metering, And Control
- Power And Control Cables
- 1x 132/33kV Main transformer 31.5MVA
- 1x 33kV Earthing Transformer
- Civil Works



220kV Switching Station at Kerawalapitiya

Scope Of Work:

ERECTION WORKS

- 2 No. 245kV Transformer bays (outdoor)
- 2 No. 36kV Transformer bays (outdoor)
- 02 Nos. 36kV Auxiliary Transformer Bays (outdoor)
- 02 Nos. 36kV Earthing Transformer Bays (outdoor)
- 10 Nos. 36kV Feeder bays (outdoor)
- 2 Nos. 36kV Generator Feeder bays (outdoor)
- 2 Nos. 36kV Transformer bays (indoor GIS)
- 10 Nos. 36kV Line feeder bays (indoor GIS)
- 2 Nos. 36kV Generator Feeder bays (indoor GIS)
- Lvac Switch Boards
- Batteries, Chargers, Distribution Boards And Inverter Equipment
- Protection, Monitoring, Metering, And Control
- Power And Control Cables
- 245kV Power Cables And Terminations
- 33kV Power Cables And Terminations
- 2X220/33kV Main Transformer 63Mva
- 2X 33kV Aux. Transformer
- 2X 33kV Earthing Transformer





Augmentation of 245kV Grid Substation at Mannar

Scope Of Work:

- Installation of 245kV outdoor double Bus bars and Post insulators - 2 Sets
- Installation of 245kV Line Bays equipment - 2 Bays
- Installation of 245KB Bus coupler Bays equipment - 1 Bays



Augmentation of 132/33kV Grid Substations at Kolonnawa

Scope Of Work:

- 02 No. 36 kV Transformer Bays
- 02 Nos. of 36 kV Earthing Transformer bays
- 02 Nos. of 36 kV Earthing Transformer bays
- 02 Nos. of 36 kV, 10 Mvar Breaker Switch Capacitor (BSC) bays
- 02 No. 36kV Transformer bays (Indoor)
- 06 Nos. (04 Nos. Overhead lines and 02 Nos. Underground cables) of 36kV feeder bays for outgoing lines (indoor)
- 02 Nos. of 36kV feeder bays for incoming generations (Indoor)
- 1 x 36 kV Bus section Bay (Indoor)
- 02 Nos. of 36 kV, Breaker Switch Capacitor bays (Indoor)
- Protection Metering & Control Facilities



Augmentation of 132/33kV Grid Substations at Dehiwala

Scope Of Work:

OUTDOOR SWITCHYARD

- 1x 145kV Transformer Bay
- 1 No. 36kV Transformer Bay
- 1 no. 36kV Earthing Transformer
- 4 Nos. 36kV Feeder
- 1x 31.5 MVA 132kV /33kV Power Transformer

- Civil Works

INDOOR SWITCHBOARD

- 01 No.145kV Transformer Bay
- 01 No. Bus Section Bay
- 01 No. Transformer Bay
- 04 Nos. of 36kV Feeder bays
- Protection Metering & Control Facilities



Augmentation of 132/33kV Grid Substations at Kotugoda

Scope Of Work:

OUTDOOR SWITCHYARD

- Gantry Tower Erection, and Switch Yard Earthing System
- Protection, Metering & Control Panels
- Protection, Metering & Control Panel Installation and Termination

LOW VOLTAGE CABLES

- Installation of cable trays, laying of power cables and terminations, and DC power and Control cables laying & Termination

HIGH VOLTAGE CABLES

- -Installation of cable trays, 33kV Cable Laying and Termination

INDOOR SWITCHBOARD

- Installation of 33kV GIS Panels
- Erection of 1x31.5MVA 132/33kV Transformers, 2x 160kVA Aux. transformers, 1x33KV Earthing Transformer
- Civil Works



Augmentation of 132/33kV Grid Substations at Horana

Scope Of Work:

- 1X 145kV Single Busbar System
- 02 Nos.145kV Transmission Line Bays
- Protection, Metering And Control
- Civil Works



Augmentation of 132/33kV Grid Substations at Padukka

Scope Of Work:

- Extension Of Existing 145kV Double Busbar System
- 02 Nos. 145kV Transmission Line Bays
- Protection Metering & Control Facilities



Augmentation of 132/33kV Grid Substations at Madampe

Scope Of Work:

OUTDOOR SWITCHYARD

- Extension of 145kV Single busbar system
- 01 No. 145kV Transformer Bay
- 01 no. 36kV Earthing Transformer Bay
- 04 Nos. 36kV Feeder bays

INDOOR SWITCHYARD

- 01 No. Bus Section Bay
- 01 No. Transformer Bay
- 04 Nos. of 36kV Feeder bays
- PROTECTION, METERING AND CONTROL
- 1x 31.5 MVA 132kV /33kV Power Transformer



2x 27MVA 10.5/132KV Transformer at Ukuwela

Scope Of Work:

- Installation , Testing & Commissioning Of 2 Nos Of 27 MVA 10kV/132kV Power Transformers At Ukuwela Power Plant.



Construction of 220kV GIS Substation at Colombo I Grid Substation.

Scope Of Work:

INDOOR SWITCHYARD

- Erection of 245kV GIS Bays – 5 Nos
- Erection of 145kV GIS 9 Bays
- Erection of 36kV GIS – 5 Bays
- Erection of 12kV GIS – 36 Bays
- Erection of 250MVA 220/132/33kV Power Transformers – 2 Nos
- Erection of 45kVA, 132/33kV Power Transformers – 4 Nos
- Erection of Earthing & Auxilliary T/F – 4 Nos
- Installation of Diesel Generator – 1 Nos
- Laying & termination of 245kV, 145kV, 33kV and 12kV Power cables
- Erection of ACDB system
- Erection of DC system
- Erection of SCADA, Control and Protection System

Augmentation of 132/33kV Grid Substation at Veyangoda

Scope Of Work:

OUTDOOR SWITCHYARD

- Gantry Tower Erection, and Switch Yard Earthing System
- Protection, Metering & Control Panel Installation and Termination

LOW VOLTAGE CABLES

- Installation of cable trays, laying of power cables and terminations, and DC power and Control cables laying & Termination

HIGH VOLTAGE CABLES

- Installation of cable trays, 33kV Cable Laying and Termination



Augmentation of 132/33kV Grid Substation at Maho

Scope Of Work:

OUTDOOR SWITCHYARD

- Gantry Tower Erection, and Switch Yard Earthing System
- Protection, Metering & Control Panels
- Protection, Metering & Control Panel Installation and Termination

LOW VOLTAGE CABLES

- Installation of cable trays, laying of power cables and terminations, and DC power and Control cables laying & Termination

TRANSFORMER ERECTION

- Erection of 1x31.5MVA 132/33kV Transformers, 1x 160kVA Aux. transformers, 1x33kV Earthing Transformer



Augmentation of 132/33kV Grid Substation at Naula

Scope Of Work:

OUTDOOR SWITCHYARD

- Gantry Tower Erection, and Switch Yard Earthing System

Protection, Metering & Control Panels

- Protection, Metering & Control Panel Installation and Termination

LOW VOLTAGE CABLES

- Installation of cable trays, laying of power cables and terminations, and DC power and Control cables laying & Termination

TRANSFORMER ERECTION

- Erection of 1x31.5MVA 132/33kV Transformers, 1x 160kVA Aux. transformers, 1x33kV Earthing Transformer



Installation, Testing & Commissioning And 132kV Cable Diversion Works For 132/11kV at Colombo B Grid Substation.

Scope Of Work:

- Erection of 132kV GIS substation at SUB B
- Underground 1132kV 800mm2 Cable laying project (1.7 KM)

Upgrading the Electrical and Lighting Protection System at Sri Lanka Tourism Development Authority

Scope Of Work:

- Supply and installation main power cable transformer to main panel board.
- Main panel and other panel boards and capacitor Bank.



Marino Beach (Pvt) Ltd

Scope Of Work:

- Installation of 11kV Substation
- Electrical Service Installation, (point Wiring)
- Extra Low Voltage Service Installation & Fire Suppression System
- Installation (FirePro System)



Havelock City Development Project – Phase Iv Block (32 Floors)

Scope Of Work:

- Supply
- Installation
- Commissioning
- Testing and Maintenance of Electrical System (Block H & F)





Installation Works of 4MVA at Ceylon Beverage International (Pvt) Ltd

Scope Of Work:

- Installation, Testing & Commissioning of 2 Nos 2000kVA Transformers.
- Supply, Installation, Testing and Commissioning of 33kV Switchgear panel,
- Supply, Installation, Testing & Commissioning of 33kV Power Cables, 33kV End Termination and Control Cables.
- Earthing of MV Panel, Transformers and 33kV Surge Arrestors, Submitting As-Build Drawings and providing accreditation form chartered engineer.



Construction of New factory Building for Pre Stressed Concrete Spun Poles at SENAKA SENN Balangoda

Scope Of Work:

- Design, Procurement, Erection and Testing & Commissioning of Factory Electrical Distribution System



Cable Laying Wind Power Project at Mannar

Scope Of Work:

- Laying, excluding trenching works of 33kV three cores 300sqmm, 40sqmm, 185sqmm, 150sqmm underground cables in 100mw Mannar wind power Project. (39,188m)



Stinging of 33kV DC LYNX and single GSW Earth Wire

Scope Of Work:

- Stinging of 33kV double circuit LYNX and single GSW earth wire at
- Vavuniya- Kebethigollawa (23 KM)
- Anuradhapura- Kahatagasdigiya (33KM)
- Kiribathkumbura- Galaha (14 KM)
- Galmadu Junction- Akkareipatthu (16KM)
- Akkareipatthu - Potuvil (40KM)
- under 33KV clean energy and network efficiency improvement project - package LOT A& LOT B



Installation of Solar System - 10 MWp - Vavunathivu

Scope Of Work:

- Total Plant Electrical & Mechanical Installation works, Testing and Commissioning Works.

Type: Ground-mounted Single Axis Tracking

Client: Solar Universe (Pvt) Ltd



Installation of Solar System - 12.5MWp - Hambantota

Scope Of Work:

- Total Plant Electrical & Mechanical Installation works, Testing and Commissioning Works.

Type: Ground-mounted Fixed

Client: Saga Solar Power (Pvt) Ltd



Installation of Solar System - 12.5MWp - Hambantota

Scope Of Work:

- Making civil foundations and fencing for power Transformer - 4 Nos
- Installation of 2.5MVA 0.4/mmKV power Transformers
- Installation of Auxiliary transformers - 1 Nos
- Installation of solar Inverters - 8 Nos
- Installation of 33kV HT Panels - 11 Nos
- Installation of Earthing System
- Laying & Termination of 33kV Cables
- Installation of ACDB Panels- 5 Nos
- Installation of DC Auxiliary power system

Client: Anorchi Lanka (Pvt) Ltd



Installation of Solar System - 12.5MWp - Hambantota

Scope Of Work:

- Making civil foundations and fencing for power Transformer - 4 Nos
- Installation of 2.5MVA 0.4/mmKV power Transformers
- Installation of Auxiliary transformers - 1 Nos
- Installation of solar Inverters - 8 Nos
- Installation of 33kV HT Panels - 11 Nos
- Installation of Earthing System
- Laying & Termination of 33kV Cables
- Installation of ACDB Panels- 5 Nos
- Installation of DC Auxiliary power system

Client: IRIS Eco Power Lanka (Pvt) Ltd



Installation of Solar System – 10MW – Welikanda, Polonnaruwa

Scope Of Work:

- Installation of 5 Nos of Solar Inverter stations
- Installation of 33kV Main Feeder Panels,
- Installation of tracker control board
- Installation of Basic stations
- Laying and termination of 33kV underground cables
- Installation of SCADA system
- Installation of String combiner boxes
- Laying of solar PV cables , laying of LT cables
- Installation of UPS system.
- Installation of weather monitoring stations
- installation of outdoor lighting
- Installation of power plant completed earthing system

Client: Solar One Ceylon (Pvt) Ltd



Installation of Solar System – 12.5MWp – Vavuniya

Scope Of Work:

- Installation of 5 Nos of Solar Inverter stations
- Installation of 33kV Main Feeder Panels
- Installation of tracker control board
- installation of Basic stations
- laying and termination of 33KV underground cables
- Installation of SCADA system,
- Installation of-String combiner boxes,
- laying of solar PV cables,
- Laying of LT cables,
- Installation of UPS system,
- Installation of weather monitoring stations,
- Installation of outdoor lighting,
- Installation of power plant complete earthing system.

Type: Ground-mounted Single Axis Tracking

Client: Vydexa (Lanka) Power Corporation (Pvt) Ltd



Installation of Solar System – 03 MWp – Mankulam

Scope Of Work:

- Total Plant Electrical, Mechanical & Civil Installation works, Testing and Commissioning Works

Type: Ground-mounted Dual-row Single-axis Tracking

Client: Jeffery Brothers



Installation of 6.3MW Rooftop Solar Power Projects at AKBAR Brothers and HIDRAMANI Factories

Scope Of Work:

- Supply, Installation of commissioning of 6.3MW rooftop solar system with all accessories.



New Royal Electricals (Pvt) Ltd Head Office Building

Scope Of Work:

- Design & Build NRE Office Premises



Royal Bio Extraction (Pvt) Ltd Head Office & Manufacturing Plant

Scope Of Work:

- Design & Build Royal Bio Extraction Office Premises



Kappalthurai Grid Substation Circuit Bungalow

Scope Of Work:

- Design & Build Kappalthurai Grid Substation Circuit Bungalow



220Kv Switching Station at Kerawalapitiya

Scope Of Work:

- Steel Roof Structure Fabrications & Installation of roofing, gutters, flashing and accessories.
- Design, Supply, Fabrication, Galvanizing, Painting & installation works of Handrail, Spiral staircase, Water tank Roof.
- Supply & Installation of Aluminum Doors & Windows, Electrically operated Rolling Shutter and Fire Proof Doors.
- Supply & Installation of Raised Floor for Control room building.
- Supply & Installation of Insert Plates and Wired Glass including Curtains, Solar Lamination.
- Supply & Installation of Exhaust Fan and Louvers.
- Earthing & Lightning Protection Works
- Supply & Installation Water supply & Sanitary System.



New Royal Electricals (Pvt) Ltd Head Office Building

Scope Of Work:

- Construction of 06 Nos mass Light Foundation and 06 Nos of Control Room Buildings



Colombo Dockyard PLC

Scope Of Work:

- Total Electrical Work
- Ship Repairing
- Instrumentation Systems Installation and Maintenance



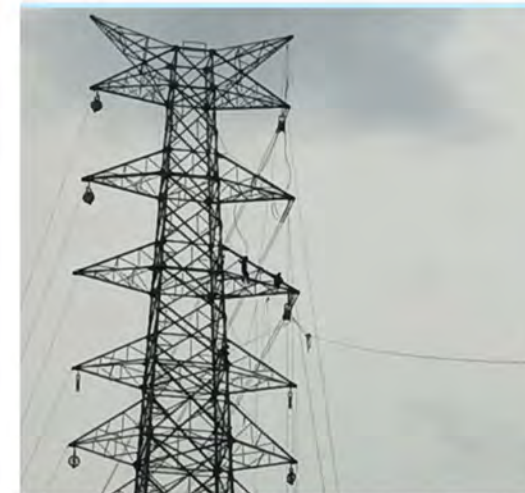
Design and Installation of Electrical and Civil works for 2*13.05 MWp Solar Systems at Hambantota



Colombo Port City Development Project

Scope Of Work:

- Installation of Substations equipment and cabling work including;
- Installation of 220/33kv Grid Substation-R1.
- 220kV Cable Laying Between Colombo port L Grid Substations to Port city R1 grid Substation.
- 33kV Cable Laying from R1 grid Substation to Land Plots.



Stringing Of Conductors And Opgw - Lot S1 - 17.3Km Under The Construction Of Kothmale - New Polpitiya 220/132Kv Four Circuit Transmission Line - Stringing, sagging, clipping and clamping

Scope Of Work:

- Stringing of 16.2km LL-Zebra conductors, including two OPGW in 220kV/132kV four circuit Transmission line from Kothmale to New Polpitiya
- Stringing of 0.4km of Double Circuit 132kV transmission line including three OPGW from Moragolla Power station to Tower No. KBY-50.
- Stringing of 0.7km of Double Circuit 132kV Transmission Line from Nawalapitiya GSS to Tower No. FC-24 including two OPGW.



LV works for Atire Pvt Ltd Solar System - Bandaragama

Scope Of Work:

- LV Cable Laying
- Cable Termination including all accessories.
- Panel Earthing Work.
- Fabrication and Painting with Anticorrosive paint and top coat paint work including 350mm width cable trunking (Paint).
- Concrete pole work.
- ABC Cable Tension /Dead end clamps and cable ties.
- Testing works.



Address



259/1, Dalupitiya Road, Hunupitiya
Wattala Sri Lanka

Email



info@nregroup.lk

Telephone



(94) 11 2938428, 493 0863

Fax



(94) 11 2938428

Website



www.nregroup.lk