

# **COMPANY PROFILE**

**EPC CONTRACTOR**

**ENGINEERING | SUPPLY | INSTALLATION | TESTING  
COMMISSIONING | MAINTENANCE | FABRICATION  
SHIP REPAIRING | CIVIL CONSTRUCTION**

# ABOUT OUR COMPANY

The year was 2003, where there is scarcity of local service providers for the installation of high-voltage grid substations. At the time, all high-voltage substation contractors were foreign nationals.

The contractors had to bring skilled manpower for erection purposes from other countries. Mr. W N Ranjith, an entrepreneur, started New Royal Electricals (Pvt) Ltd in 2003 to cater skilled manpower to high voltage substation contractors.

Providing only installation services for HV substation was not sufficient for the sustainability of the company, since HV substation comes from time to time. As an entrepreneur, he had to switch for other electrical projects too. Medium voltage installations, low voltage installations, industrial automation, and maintenance services are few other areas he targeted.

High flexibility, availability of highly skilled manpower, and commitment to clients are few of key factors of success. New Royal Electrical is still the first choice of both foreign and local contractors for electrical installation work.



In 2009, New Royal Electricals (Pvt) Ltd started its operation to cater booming renewable energy sector, as a trading arm for NRE GROUP. NRE GROUP consists of New Royal Electrical and New Royal Electrical (Pvt) Ltd.

At present, 1000+ employees are working under NRE GROUP umbrella. Safety is our culture, and quality is a standard for all of our executions.

NRE is proud to mention that it obtained three prestigious international certificates in a single go in the year 2018. This revised system manual addresses the changes it has taken to upgrade its OHS certificate to ISO 45001: 2018.



# Vision

To be the leader in the field of electrical installations in energy sector, Infrastructure development sector and industry.

# Mission

To be the preferred electrical contractor maintaining the highest standard of quality, safety, leadership and performances to our clients by the way of our continuous developments with preserving environment.

# OUR CORPORATE VALUES

- » Safety first.
- » Never compromise quality of works.
- » Make work enjoyable, recognition and rewarding.
- » Maintain higher customer satisfaction.
- » Be a friend of the environment.



# NEW ROYAL ELECTRICAL GROUP

## WHY NRE ?

- QUALITY IS A STANDARD
- SAFETY IS OUR CULTURE
- COMMITTED TO CLIENTS
- HIGH COMPETENCY LEVEL
- HIGH FLEXIBILITY

NRE IS A LEADER IN ELECTRICAL AND AUTOMATION SECTORS, AND IS DEDICATED TO PROVIDING THE INDUSTRY'S MOST SKILLED CRAFTSMANSHIP, IMPECCABLE PERFORMANCE, AND COMPETITIVE PRICING TO OUR CLIENTS.

NRE IS PROUD TO MENTION THAT IT HAS OBTAINED THREE PRESTIGIOUS INTERNATIONAL CERTIFICATES IN A SINGLE GO IN THE YEAR 2018 THIS REVISED SYSTEM MANUAL ADDRESSES THE CHANGES IT HAS TAKEN TO UPGRADE ITS OHS CERTIFICATE TO ISO 45001: 2018.

## QUALITY ASSURANCE

AT NEW ROYAL GROUP, QUALITY IS STANDARD. WE ARE COMMITTED TO THE EFFICIENT DELIVERY OF QUALITY ACROSS THE SECTORS WE SERVE. OUR QUALITY ASSURANCE PRACTICES ENSURE OUR CUSTOMERS, THE JOB PERFORMED BY THE NRE IS AT ITS BEST. ALL EMPLOYEES OF NRE GROUP ARE AWARE OF THE COMPANY'S QUALITY POLICY TO MAINTAIN QUALITY STANDARDS EVERYWHERE.

# AFFILIATIONS & REGISTRATIONS

**SLS** SRI LANKA STANDARDS INSTITUTION  
GUARANTEE OF QUALITY

**CERTIFICATE OF CONFORMITY**

The Sri Lanka Standards Institution  
Certifies that the Quality Management System of  
**NEW ROYAL ELECTRICALS (PVT) LTD**  
NO.259/1, DALUPITTIYA ROAD, HUNUPITTIYA, WATTALA  
SRI LANKA

has been assessed and approved in accordance with  
the requirements of ISO 9001:2015/ SLS ISO 9001:2015

Certificate No: **QSC 09644**  
This certificate issued on **2025-01-28** is valid up to **2028-01-27**  
Date of first certification **2019-01-28**

**SCOPE OF CERTIFICATION**  
SOURCING, ACCEPTING AND CONSTRUCTION OF BUILDINGS, SWITCH YARD FOUNDATIONS, TRANSMISSION LINE TOWER FOUNDATIONS AND ASSOCIATED INFRASTRUCTURE DEVELOPMENT WORKS; STRINGING OF ELECTRICAL TRANSMISSION LINES UP TO 220kV, INSTALLATION AND COMMISSIONING OF LOW VOLTAGE/MEDIUM VOLTAGE/HIGH VOLTAGE ELECTRICAL SYSTEMS AS PER PRE-DETERMINED DESIGN AND SPECIFICATIONS

This approval is subject to the continued satisfactory operation of the organization's Quality Management System.

**SRI LANKA STANDARDS INSTITUTION**  
No. 17, Victoria Place, Elvitigala Mawatha, Colombo 08, Sri Lanka  
www.slsi.lk

**SLS** SRI LANKA STANDARDS INSTITUTION  
GUARANTEE OF QUALITY

**CERTIFICATE OF CONFORMITY**

The Sri Lanka Standards Institution  
Certifies that the Environmental Management System of  
**NEW ROYAL ELECTRICALS (PVT) LTD**  
NO.259/1, DALUPITTIYA ROAD, HUNUPITTIYA, WATTALA  
SRI LANKA

has been assessed and approved in accordance with  
The requirements of ISO 14001:2015/ SLS ISO 14001:2015

Certificate No: **ESC 01753**  
This certificate issued on **2025-01-28** is valid up to **2028-01-27**  
Date of first certification **2019-01-28**

**SCOPE OF CERTIFICATION**  
SOURCING, ACCEPTING AND CONSTRUCTION OF BUILDINGS, SWITCH YARD FOUNDATIONS, TRANSMISSION LINE TOWER FOUNDATIONS AND ASSOCIATED INFRASTRUCTURE DEVELOPMENT WORKS; STRINGING OF ELECTRICAL TRANSMISSION LINES UP TO 220kV, INSTALLATION AND COMMISSIONING OF LOW VOLTAGE/MEDIUM VOLTAGE/HIGH VOLTAGE ELECTRICAL SYSTEMS AS PER PRE-DETERMINED DESIGN AND SPECIFICATIONS

This approval is subject to the continued satisfactory operation of the organization's Environmental Management System

**SRI LANKA STANDARDS INSTITUTION**  
No. 17, Victoria Place, Elvitigala Mawatha, Colombo 08, Sri Lanka  
www.slsi.lk

**SLS** SRI LANKA STANDARDS INSTITUTION  
GUARANTEE OF QUALITY

**CERTIFICATE OF CONFORMITY**

Sri Lanka Standards Institution  
certifies that the  
Occupational Health and Safety Management System of  
**NEW ROYAL ELECTRICALS (PVT) LTD**  
NO.259/1, DALUPITTIYA ROAD, HUNUPITTIYA, WATTALA  
SRI LANKA

has been assessed and approved in accordance with the  
requirements of ISO 45001:2018/ SLS ISO 45001:2018

Certificate No **OHSSC 00523**  
This Certificate issued on: **2025-01-28** is valid up to **2028-01-27**  
Date of First Certification : **2019-01-28**

**SCOPE OF CERTIFICATION**  
SOURCING, ACCEPTING AND CONSTRUCTION OF BUILDINGS, SWITCH YARD FOUNDATIONS, TRANSMISSION LINE TOWER FOUNDATIONS AND ASSOCIATED INFRASTRUCTURE DEVELOPMENT WORKS; STRINGING OF ELECTRICAL TRANSMISSION LINES UP TO 220kV, INSTALLATION AND COMMISSIONING OF LOW VOLTAGE/MEDIUM VOLTAGE/HIGH VOLTAGE ELECTRICAL SYSTEMS AS PER PRE-DETERMINED DESIGN AND SPECIFICATIONS

This approval is subject to the continued satisfactory operation of the organization's Occupational Health and Safety Management System

**SRI LANKA STANDARDS INSTITUTION**  
No. 17, Victoria Place, Elvitigala Mawatha, Colombo 08, Sri Lanka  
www.slsi.lk

GOVERNMENT OF DEMOCRATIC SOCIALIST REPUBLIC OF SRI LANKA

**CIDA**  
(Successor to ICTAD)

**CONTRACTORS RECORD BOOK**  
MAIN CONSTRUCTION CONTRACTORS

NATIONAL REGISTRATION, GRADING AND MONITORING  
OF  
MAIN CONSTRUCTION CONTRACTORS

CONSTRUCTION INDUSTRY DEVELOPMENT AUTHORITY  
"SAVIRIPAYA"  
123, WIJERAMA MAWATHA,  
COLOMBO 07.

**CIDA C3**

GOVERNMENT OF DEMOCRATIC SOCIALIST REPUBLIC OF SRI LANKA

**CIDA**  
(Successor to ICTAD)

**CONTRACTORS RECORD BOOK**  
SPECIALIST CONSTRUCTION CONTRACTORS

NATIONAL REGISTRATION, GRADING AND MONITORING  
OF  
SPECIALIST CONSTRUCTION CONTRACTORS

CONSTRUCTION INDUSTRY DEVELOPMENT AUTHORITY  
"SAVIRIPAYA"  
123, WIJERAMA MAWATHA,  
COLOMBO 07.

**CIDA EM1**

GOVERNMENT OF DEMOCRATIC SOCIALIST REPUBLIC OF SRI LANKA

**CIDA**  
(Successor to ICTAD)

**CONTRACTORS RECORD BOOK**  
SPECIALIST CONSTRUCTION CONTRACTORS

NATIONAL REGISTRATION, GRADING AND MONITORING  
OF  
SPECIALIST CONSTRUCTION CONTRACTORS

CONSTRUCTION INDUSTRY DEVELOPMENT AUTHORITY  
"SAVIRIPAYA"  
123, WIJERAMA MAWATHA,  
COLOMBO 07.

**CIDA SP-4**

# SECTORS WE SERVE

## HIGH VOLTAGE

NRE is a leader in installation 220/132/33 kV Grid Substations, both indoor and outdoor. Highly skilled engineers, technicians and availability of tools and machinery being our main strengths. We are one of preferred installer among the substation construction community.

## MEDIUM VOLTAGE

NRE undertakes turnkey medium voltage systems from conceptualization to commissioning by providing cutting-edge technology across the industry which are tailored to the need of customers. In housed skill, competency, tools and machinery lead, achieve beyond expectations of our clients.

## LOW VOLTAGE

NRE undertakes turnkey low voltage systems from conceptualization to commissioning by providing latest technology to our clients. Manufacturing plants, high rise commercial and apartment buildings have been our main focusing sectors, where high competency levels and timely delivery is required.

## EXTRA LOW VOLTAGE

Installation of Building Management Systems (BMS), CCTV systems, MATV Systems, PA Systems, DATA networks, fire protection systems, fire detection systems, access control Systems, energy monitoring systems and instrumentation systems are our main focus areas in the industry.

## HYDRO POWER PLANTS

NRE has the competency and capability of total supply, erection, testing and commissioning of electro mechanical systems for mini-hydro power plants.

## WIND POWER PLANTS

NRE is one of the preferred service providers for supply, installation, testing and commissioning of electrical system on wind power plants.

## SOLAR POWER PLANTS

We are one of the leading solution providers for solar net metering systems. We undertake all kinds of supply and installation work related to solar electricity power generating systems.

## SHIP BUILDING INDUSTRY

NER undertake ship repairing, ship electrical and instrumentation systems installation and maintenance and also total electrical system installer for new ship buildings.

# SECTORS WE SERVE continued

## OVERHEAD TRANSMISSION LINES

We are one of the preferred installers for 220/132/33 kV transmission lines in erection of towers, cable stringing, cable termination and jointing.

## UNDERGROUND CABLE LAYING AND TERMINATION

NRE undertake both underground and over-ground cable laying and termination work, including supply in any voltage level. Highly skilled and competence cable jointers are our main strength. Our qualified engineers designs systems for newest IET/IEEE standards.

## MAINTENANCE & SERVICES

We are providing annual maintenance services for power transformers, HT panels, LT panels, cables, and protection systems. Transformers oil filtration, oil BDV testing, insulation testing, protection relay testing, rust removing and painting are few of services we carry out.

## EARTHING & LIGHTENING PROTECTION SYSTEM

NRE is one of the leading earthing and lightning protection system installers in Sri Lanka for factories, commercial and apartment buildings, communication towers, water towers, etc...

## FABRICATIONS

NRE is the preferred fabricator for all kinds of fabrication work including cable gantries, transmission towers, base frames, ladders and various types of customized brackets, etc...

## INDUSTRIAL LIGHTING

We offer innovative lighting solutions that begin from conceptualization, design, supply, installation, testing and commissioning that cover industrial, commercial and roads.

## POWER GENERATION

We offer diesel powered generators for temporary power needs of our clients.

## CONVERTED CONTAINERS

Our customized converted containers for offices and storage facilities are widely accepted in the industry for making temporary operation facilities. We have both AC and Non-AC, and storage cabins for our clients.

## CIVIL CONSTRUCTION

NRE provides a multi-disciplinary design and building service to complement us wide range of construction and consultancy services. Delivering end-to-end building and civil engineering services across every major sector.

## TESTING EQUIPMENT

From multimeters and insulation testers to HV testing, Primary injection testing equipment, Transformer testing, Cable and panel testing, Earthing, Battery bank, Cable fault locator testing, this equipment plays a crucial role in preventing electrical failures, enhancing system performance,

# COMPLETED PROJECTS



## 220/132/33kV Grid Substation Erection & Civil Works at Kappalthurai

Scope Of Work:

### ERECTION WORKS

- 245kV double busbar system (outdoor)
- 2 Nos. 245kV Line bays (outdoor)
- 1 No. 245kV Bus Coupler (outdoor)
- 2 No. 245kV Transformer bays (outdoor)
- 2 No. 36kV Transformer bays (outdoor)
- 02 Nos. 36kV Auxiliary Transformer Bays (outdoor)
- 02 Nos. 36kV Earthing Transformer Bays (outdoor)
- 14 Nos. 36kV Feeder bays (outdoor)
- 2 Nos. 36kV Generator Feeder bays (outdoor)
- 2 Nos. 36kV Transformer bays (indoor GIS)
- 14 Nos. 36kV Line feeder (indoor GIS)
- 2 Nos. 36kV Generator Feeder bays (indoor GIS)
- 1 No. 36kV Bus Section (indoor GIS)
- 2x 220(132)/33kV Main transformer 63 MVA
- 2x 33kV AUX. Transformer
- 2x 33kV Earthing Transformer
- 25kVA Diesel Generator
- 36kV power cables and outdoor terminations
- Lightning Protection
- Protection, Metering, Monitoring And Control
- LVAC Switch Boards
- Batteries, Chargers, Distribution Boards And Inverter Equipment

### CIVIL WORKS



## Augmentation of 132/33kV Grid Substations at New Anuradhapura

Scope Of Work:

### OUTDOOR SWITCHGEAR

- 145kV Double busbar system
- 2 Nos. 145kV Line bays for Puttalam
- 2 Nos. 145kV Line bays for Habarana
- Protection, Metering, Monitoring, And Control
- Communication Equipment
- Substation Earthing
- Lightning Protection System



## 132/33kV Grid Substation at Old Anuradhapura

Scope Of Work:

### Outdoor SWITCHGEAR

- 145kV Single busbar system
- 2 Nos. 145kV Line bays for New Anuradapura
- 1 No. 145kV Bus Section bay
- 3 Nos. 145kV Transformer bay
- 3 Nos. 36kV Transformer bays
- 9 Nos. 36kV Line Feeder bays
- 3 Nos. 36kV Generator Feeder bays
- LVAC Switch Boards
- Batteries, Chargers, Distribution Boards & Inverter Equipment
- Protection, Metering, Monitoring, And Control
- Power And Control Cables
- Communication Equipment
- Substation Earthing
- 3X 132/33kV Main Transformer 31.5Mva
- 3 X 33kV Zigzag Earthing Transformer 800A, 30 Sec
- 3 X 33/0.4kV Delta Star Auxiliary Transformer 160kVa
- Supporting Structures Including Gantries

### INDOOR SWITCHGEAR

- 3 Nos. 36kV Transformer bays
- 9 Nos. 36kV Line feeder bays
- 3 Nos. 36kV Generator Feeder bays
- 2 Nos. 36kV Bus Section bays



## 220/132/33kV CEB AIS Substations at Trincomalee

Scope Of Work:

### ERECTION WORKS

- 145kV Single busbar system1
- 2 Nos. 145kV Line bays
- 1 No. 145kV Bus Section Bay
- 2 No. Transformer Bays
- LVAC SWITCH BOARD
- Batteries, Chargers, Distribution Boards and Inverter Equipment
- Protection, Monitoring, Metering, And Control
- Power And Control Cables
- Diesel Generator
- Lightning Protection System
- Modification Substation Earthing
- Communication Equipment And Scada Gateways



## Augmentation of 132/33kV Grid Substations at Kalutara

Scope Of Work:

- 145kV Single busbar system
- 2 Nos. 145kV Line bays for Pannipitiya and Matugama
- 1 No. 145kV Bus Section Bay
- 2 Nos. 145kV Transformer Bay
- 2 Nos. 36kV Transformer bays
- 6 Nos. 36kV Line Feeder bays
- 2 Nos. 36kV Generator Feeder bays

### INDOOR SWITCHGEAR

- 2 Nos. 36kV Transformer bays
- 6 Nos. 36kV Line feeder bays
- 2 Nos. 36kV Generator Feeder bays
- 1 No. 36kV Bus Section Bay
- LVAC Switch Boards



## 220/132/33kV CEB AIS Substations at Katunayake

Scope Of Work:

### ERECTION WORKS

- 1 No. 145kV Transformer bays (outdoor)
- 1 No. 36kV Transformer (outdoor)
- 3 Nos. 36kV Feeder bays (outdoor)
- 1 Nos. 36kV Generator Feeder bays (outdoor)
- 1 No. 36kV Earthing Transformer (outdoor)
- 1 Nos. 36kV Transformer bays (indoor GIS)
- 5 Nos. 36kV Line feeder bays
- 1 Nos. 36kV Generator Feeder bays
- 2 No. 36kV Bus Section Bay with Busduct
- Protection, Monitoring, Metering, And Control
- Power And Control Cables
- 1x 132/33kV Main transformer 31.5MVA
- 1x 33kV Earthing Transformer
- Civil Works



## 220kV Switching Station at Kerawalapitiya

Scope Of Work:

### ERECTION WORKS

- 2 No. 245kV Transformer bays (outdoor)
- 2 No. 36kV Transformer bays (outdoor)
- 02 Nos. 36kV Auxiliary Transformer Bays (outdoor)
- 02 Nos. 36kV Earthing Transformer Bays1 (outdoor)
- 10 Nos. 36kV Feeder bays (outdoor)
- 2 Nos. 36kV Generator Feeder bays (outdoor)
- 2 Nos. 36kV Transformer bays (Indoor GIS)
- 10 Nos. 36kV Line feeder bays (Indoor GIS)
- 2 Nos. 36kV Generator Feeder bays (Indoor GIS)
- Lvac Switch Boards
- Batteries, Chargers, Distribution Boards And Inverter Equipment
- Protection, Monitoring, Metering, And Control
- Power And Control Cables
- 245kV Power Cables And Terminations
- 33kV Power Cables And Terminations
- 2X220/33kV Main Transformer 63MVA
- 2X 33kV Aux. Transformer
- 2X 33kV Earthing Transformer



## Augmentation of 245kV Grid Substation at Mannar

### Scope Of Work:

- Installation of 245kV outdoor double Bus bars and Post insulators – 2 Sets
- Installation of 245kV Line Bays equipment – 2 Bays
- Installation of 245KB Bus coupler Bays equipment – 1 Bays



## Augmentation of 132/33kV Grid Substations at Kolonnawa

### Scope Of Work:

- 02 No. 36 kV Transformer Bays
- 02 Nos. of 36 kV Earthing Transformer bays
- 02 Nos. of 36 kV Earthing Transformer bays
- 02 Nos. of 36 kV, 10 Mvar Breaker Switch Capacitor (BSC) bays
- 02 No. 36kV Transformer bays ( Indoor)
- 06 Nos. (04 Nos. Overhead lines and 02 Nos. Underground cables) of 36kV feeder bays for outgoing lines ( indoor)
- 02 Nos. of 36kV feeder bays for incoming generations ( Indoor)
- 1 x 36 kV Bus section Bay ( Indoor)
- 02 Nos. of 36 kV, Breaker Switch Capacitor bays ( Indoor)
- Protection Metering & Control Facilities



## Augmentation of 132/33kV Grid Substations at Dehiwala

### Scope Of Work:

#### OUTDOOR SWITCHYARD

- 1x 145kV Transformer Bay
- 1 No. 36kV Transformer Bay
- 1 no. 36kV Earthing Transformer
- 4 Nos. 36kV Feeder
- 1x 31.5 MVA 132kV /33kV Power Transformer

- Civil Works

#### INDOOR SWITCHBOARD

- 01 No.145kV Transformer Bay
- 01 No. Bus Section Bay
- 01 No. Transformer Bay
- 04 Nos. of 36kV Feeder bays
- Protection Metering & Control Facilities



## Augmentation of 132/33kV Grid Substations at Kotugoda

### Scope Of Work:

#### OUTDOOR SWITCHYARD

- Gantry Tower Erection, and Switch Yard Earthing System Protection, Metering & Control Panels
- Protection, Metering & Control Panel Installation and Termination

#### LOW VOLTAGE CABLES

- Installation of cable trays, laying of power cables and terminations, and DC power and Control cables laying & Termination

#### HIGH VOLTAGE CABLES

- -Installation of cable trays, 33kV Cable Laying and Termination

#### INDOOR SWITCHBOARD

- Installation of 33kV GIS Panels

#### TRANSFORMER ERECTION

- Erection of 1x31.5MVA 132/33kV Transformers, 2x 160kVA Aux. transformers, 1x33kV Earthing Transformer
- Civil Works



## Augmentation of 132/33kV Grid Substations at Horana

Scope Of Work:

- 1X 145kV Single Busbar System
- 02 Nos.145kV Transmission Line Bays
- Protection, Metering And Control
- Civil Works



## Augmentation of 132/33kV Grid Substations at Padukka

Scope Of Work:

- Extension Of Existing 145kV Double Busbar System
- 02 Nos. 145kV Transmission Line Bays
- Protection Metering & Control Facilities



## Augmentation of 132/33kV Grid Substations at Madampe

Scope Of Work:

### OUTDOOR SWITCHYARD

- Extension of 145kV Single busbar system
- 01 No. 145kV Transformer Bay
- 01 no. 36kV Earthing Transformer Bay
- 04 Nos. 36kV Feeder bays

### INDOOR SWITCHYARD

- 01 No. Bus Section Bay
- 01 No. Transformer Bay
- 04 Nos. of 36kV Feeder bays
- PROTECTION, METERING AND CONTROL
- 1x 31.5 MVA 132kV /33kV Power Transformer



## 2x 27MVA 10.5/132kV Transformer at Ukuwela

Scope Of Work:

- Installation , Testing & Commissioning Of 2 Nos Of 27 MVA 10kV/132kV Power Transformers At Ukuwela Power Plant.



## Construction of 220kV GIS Substation at Colombo I Grid Substation.

Scope Of Work:

### INDOOR SWITCHYARD

- Erection of 245kV GIS Bays – 5 Nos
- Erection of 145kV GIS 9 Bays
- Erection of 36kV GIS – 5 Bays
- Erection of 12kV GIS – 36 Bays
- Erection of 250MVA 220/132/33kV Power Transformers – 2 Nos
- Erection of 45kVA, 132/33kV Power Transformers – 4 Nos
- Erection of Earthing & Auxiliary T/F – 4 Nos
- Installation of Diesel Generator – 1 Nos
- Laying & termination of 245kV, 145kV, 33kV and 12kV Power cables
- Erection of ACDB system
- Erection of DC system
- Erection of SCADA, Control and Protection System



## Augmentation of 132/33kV Grid Substation at Veyangoda

Scope Of Work:

### OUTDOOR SWITCHYARD

- Gantry Tower Erection, and Switch Yard Earthing System
- Protection, Metering & Control Panels Installation and Termination

### LOW VOLTAGE CABLES

- Installation of cable trays, laying of power cables and terminations, and DC power and Control cables laying & Termination

### HIGH VOLTAGE CABLES

- Installation of cable trays, 33kV Cable Laying and Termination

### INDOOR SWITCHBOARD

- Installation of 33kV GIS Panels
- Erection of 8x31.5MVA 132/33kV Transformers, 1x 160kVA Aux. transformers, 1x33kV Earthing Transformer



## Augmentation of 132/33kV Grid Substation at Maho

Scope Of Work:

### OUTDOOR SWITCHYARD

- Gantry Tower Erection, and Switch Yard Earthing System
- Protection, Metering & Control Panels
- Protection, Metering & Control Panel Installation and Termination

### LOW VOLTAGE CABLES

- Installation of cable trays, laying of power cables and terminations, and DC power and Control cables laying & Termination

### TRANSFORMER ERECTION

- Erection of 1x31.5MVA 132/33kV Transformers, 1x 160kVA Aux. transformers, 1x33kV Earthing Transformer



## Augmentation of 132/33kV Grid Substation at Naula

Scope Of Work:

### OUTDOOR SWITCHYARD

- Gantry Tower Erection, and Switch Yard Earthing System
- Protection, Metering & Control Panels Installation and Termination

### LOW VOLTAGE CABLES

- Installation of cable trays, laying of power cables and terminations, and DC power and Control cables laying & Termination

### TRANSFORMER ERECTION

- Erection of 1x31.5MVA 132/33kV Transformers, 1x 160kVA Aux. transformers, 1x33kV Earthing Transformer



## Installation, Testing & Commissioning And 132kV Cable Diversion Works For 132/11kV at Colombo B Grid Substation.

Scope Of Work:

- Erection of 132kV GIS substation at SUB B
- Underground 1132kV 800mm<sup>2</sup> Cable laying project ( 1.7 KM)



## Upgrading the Electrical and Lighting Protection System at Sri Lanka Tourism Development Authority.

Scope Of Work:

- Supply and installation main power cable transformer to main panel board.
- Main panel and other panel boards and capacitor Bank.



## Marino Beach (Pvt) Ltd

Scope Of Work:

- Installation of 11kV Substation
- Electrical Service Installation, (point Wiring)
- Extra Low Voltage Service Installation & Fire Suppression System
- Installation (FirePro System)



## Havelock City Development Project – Phase Iv Block (32 Floors)

Scope Of Work:

- Supply
- Installation
- Commissioning
- Testing and Maintenance of Electrical System (Block H & F)



## Installation Works of 4MVA at Ceylon Beverage International (Pvt) Ltd

### Scope Of Work:

- Installation, Testing & Commissioning of 2 Nos 2000kVA Transformers.
- Supply, Installation, Testing and Commissioning of 33kV Switchgear panel,
- Supply, Installation, Testing & Commissioning of 33kV Power Cables, 33kV End Termination and Control Cables.
- Earthing of MV Panel, Transformers and 33kV Surge Arrestors, Submitting As-Build Drawings and providing accreditation form chartered engineer.



## Construction of New factory Building for Pre Stressed Concrete Spun Poles at SENAKA SENN Balangoda

### Scope Of Work:

- Design, Procurement, Erection and Testing & Commissioning of Factory Electrical Distribution System



## Cable Laying Wind Power Project at Mannar

### Scope Of Work:

- Laying, excluding trenching works of 33kV three cores 300sqmm, 40sqmm, 185sqmm, 150sqmm underground cables in 100mw Mannar wind power Project. ( 39,188m)



## Colombo Dockyard PLC

### Scope Of Work:

- Total Electrical Work
- Ship Repairing
- Instrumentation Systems Installation and Maintenance



## Stringing of 33kV DC LYNX and single GSW Earth Wire

### Scope Of Work:

- Stringing of 33kV double circuit LYNX and single GSW earth wire at
- Vavuniya- Kebethigollawa ( 23 KM)
- Anuradhapura- Kahatagasdigiliya ( 33KM)
- Kiribathkumbura- Galaha ( 14 KM)
- Galmadu Junction- Akkareipatthu ( 16KM)
- Akkareipatthu - Potuvil ( 40KM)
- under 33KV clean energy and network efficiency improvement project - package LOT A& LOT B



## Stringing of Conductors of 33 kV Double Circuit Lynx Tower Line from Maliboda GSS to Panakoora Gantry (11 Sections with 12 Tower Locations, 3.5 km)

### Scope Of Work:

- Stringing Of Conductors Of 33 Kv Double Circuit Lynx Tower Line From Maliboda GSS To Panakoora Gantry (11 Sections With 12 Tower Locations, 3.5 Km)



## Stringing of 21.8 km Zebra Conductors, GSW and OPGW of 132kV Transmission Line From Tower Nos. BDA 04 to BDA 62 Under The Reconstruction of Badulla- Madagama 132kV Transmission Line

### Scope Of Work:

- Stringing of 21.8 km Zebra Conductors, GSW and OPGW of 132kV Transmission Line From Tower Nos. BDA 04 to BDA 62 Under The Reconstruction of Badulla- Madagama 132kV Transmission Line



## Removal of Existing Transmission Line From Badulla to Medagama 132KV Transmission Line Project ( 27 KM)

### Scope Of Work:

- Removal of Existing Transmission Line From Badulla to Medagama 132KV Transmission Line Project ( 27 KM)



## Removal Conductor Accessories of Embilipitiya - Hambanthota 132kV Transmission Line Stringing of New 2.5km Line Section at Sooriyawewa.

Scope Of Work:

- Removal Conductor Accessories of Embilipitiya - Hambanthota 132kV Transmission Line Stringing of New 2.5km Line Section at Sooriyawewa.



## Erection of Two Numbres of 220KV TD1+18 and TD1+27 Transmission Towers in Biyagama-Kotmale 220kV Transmission Line at Bulathkohupitiya

Scope Of Work:

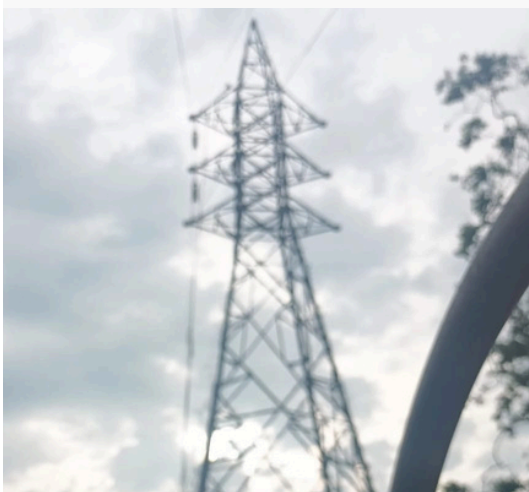
- Erection of Two Numbres of 220KV TD1+18 and TD1+27 Transmission Towers in Biyagama-Kotmale 220kV Transmission Line at Bulathkohupitiya



## Removing of Towers in Badulla - Monaragala 132kV Transmission Line under the Reconstruction of Badulla-Madagama 132kV Transmission Line

Scope Of Work:

- Removing of Towers in Badulla - Monaragala 132kV Transmission Line under the Reconstruction of Badulla- Madagama 132kV Transmission Line



## Construction of DC LYNX Tower Line (1.65KM) from Mirigama Interchange to Kandalama Junction CEP-section 02, Foundation & Erection of 05 NOS of 33kV Towers - LOT A

Scope Of Work:

- Construction of DC LYNX Tower Line (1.65KM) from Mirigama Interchange to Kandalama Junction CEP-section 02, Foundation & Erection of 05 NOS of 33kV Towers - LOT A



## Laying Foundation & Erection of 02 Nos of DC Towers and Stringing of 0.235km 33kV DC Lynx Tower Line Crossing at Pitiyegedara

### Scope Of Work:

- Laying Forundation & Erection of 02 Nos of DC Towers and Stringing of 0.235km 33kV DC Lynx Tower Line Crossing at Pitiyegedara



## Laying foundation & Erection of 02 Nos of DC Towers and Stringing of 0.2km 33kV DC Lynx Tower line at Central Expressway crossing of 33KV line Between Wanduruwa Gantry to Wijayarajadahana S/S

### Scope Of Work:

- Laying foundation & Erection of 02 Nos of DC Towers and Stringing of 0.2km 33kV DC Lynx Tower line at Central Expressway crossing of 33KV line Between Wanduruwa Gantry to Wijayarajadahana S/S



## Removing of Towers in Badulla - Monaragala 132kV Transmission Line under the Reconstruction of Badulla-Madagama 132kV Transmission Line

### Scope Of Work:

- Removing of Towers in Badulla - Monaragala 132kV Transmission Line under the Reconstruction of Badulla- Madagama 132kV Transmission Line



## Laying Foundation & Erection of 04 Nos of DC Towers and Stringing of 0.7km 33KV DC Lynx Tower Line From Gampaha Gantry to Bemmulla

### Scope Of Work:

- Laying Foundation & Erection of 04 Nos of DC Towers and Stringing of 0.7km 33KV DC Lynx Tower Line From Gampaha Gantry to Bemmulla



## Stringing of 0.175km, 33kV DC Lynx Tower and Removal of Existing 33kV DC Tower Line at Rathmalvita, Gampaha

Scope Of Work:

- Stringing of 0.175km, 33kV DC Lynx Tower and Removal of Existing 33kV DC Tower Line at Rathmalvita, Gampaha



## Electricals Service Work at INSEE Cement Puttalam

Scope Of Work:

- Maintaining, repairing, and installing electrical systems.
- Troubleshooting electrical issues, upgrading wiring, installing lighting and outlets, and ensuring compliance with safety standards.



## ESP Transformer Repairing And Service Work - Silvermill Group

Scope Of Work:

- ESP Transformer Repairing And Service Work - 2 nos.



## 1MVA Roof Top Solar System Transformer Service Work at Katunayake Trinity Steel Factory

Scope Of Work:

- Transformer Service Work.



## Installation of Solar System - 10 MWp - Vavunathivu

Scope Of Work:

- Total Plant Electrical & Mechanical Installation works, Testing and Commissioning Works.

Type: Ground-mounted Single Axis Tracking

Client: Solar Universe (Pvt) Ltd



## Installation of Solar System - 12.5MWp - Hambantota

Scope Of Work:

- Total Plant Electrical & Mechanical Installation works, Testing and Commissioning Works.

Type: Ground-mounted Fixed

Client: Saga Solar Power (Pvt) Ltd



## Installation of Solar System - 12.5MWp - Hambantota

Scope Of Work:

- Installation DC Module with Structure.
- Making civil foundations and fencing for power Transformer - 4 Nos
- Installation of 2.5MVA 0.4/kV power Transformers
- Installation of Auxiliary transformers - 1 Nos
- Installation of solar Inverters - 8 Nos
- Installation of 33kV HT Panels - 11 Nos
- Installation of Earthing System
- Laying & Termination of 33kV Cables
- Installation of ACDB Panels- 5 Nos
- Installation of DC Auxiliary power system.
- Total Civil Works

Client: Anorchi Lanka (Pvt) Ltd



## Installation of Solar System - 12.5MWp - Hambantota

Scope Of Work:

- Installation DC Module with Tracking Structure.
- Making civil foundations and fencing for power Transformer - 4 Nos
- Installation of 2.5MVA 0.4/kV power Transformers
- Installation of Auxiliary transformers - 1 Nos
- Installation of solar Inverters - 8 Nos
- Installation of 33kV HT Panels - 11 Nos
- Installation of Earthing System
- Laying & Termination of 33kV Cables
- Installation of ACDB Panels- 5 Nos
- Installation of DC Auxiliary power system.
- Total Civil Works.

Client: IRIS Eco Power Lanka (Pvt) Ltd



## Installation of Solar System – 10MW – Welikanda, Polonnaruwa

Scope Of Work:

- Installation DC Module with Tracking Structure.
- Installation of 5 Nos of Solar Inverter stations
- Installation of 33kV Main Feeder Panels,
- Installation of tracker control board
- Installation of Basic stations
- Laying and termination of 33kV underground cables
- Installation of SCADA system
- Installation of String combiner boxes
- Laying of solar PV cables , laying of LT cables
- Installation of UPS system.
- Installation of weather monitoring stations
- installation of outdoor lighting
- Installation of power plant completed earthing system
- Total Civil Works

Client: Solar One Ceylon (Pvt) Ltd



## Installation of Solar System – 12.5MWp – Vavuniya

Scope Of Work:

- Installation DC Module with Tracking Structure.
- Installation of 5 Nos of Solar Inverter stations
- Installation of 33kV Main Feeder Panels
- Installation of tracker control board
- installation of Basic stations
- laying and termination of 33KV underground cables
- Installation of SCADA system,
- Installation of–String combiner boxes,
- laying of solar PV cables,
- Laying of LT cables,
- Installation of UPS system,
- Installation of weather monitoring stations,
- Installation of outdoor lighting,
- Installation of power plant complete earthing system.
- Total Civil Works

Type: Ground-mounted Single Axis Tracking

Client: Vydexa (Lanka) Power Corporation (Pvt) Ltd



## Installation of Solar System – 03 MWp – Mankulam

Scope Of Work:

- Total Plant Electrical, Mechanical & Civil Installation works, Testing and Commissioning Works

Type: Ground-mounted Dual-row Single-axis Tracking

Client: Jeffery Brothers



## Installation of 6.3MW Rooftop Solar Power Projects at AKBAR Brothers and HIDRAMANI Factories

Scope Of Work:

- Supply, Installation of commissioning of 6.3MW rooftop solar system with all accessories.



## LV works for Atire Pvt Ltd Solar System – Bandaragama

Scope Of Work:

- LV Cable Laying
- Cable Termination including all accessories.
- Panel Earthing Work.
- Fabrication and Painting with Anticorrosive paint and top coat paint work including 350mm width cable trunking ( Paint).
- Concrete pole work.
- ABC Cable Tension /Dead end clamps and cable ties.
- Testing works.



## Installation of 630 kW Roof top solar system

Scope Of Work:

- Total Electrical Work.

Client: E. B. CREASY



## Installation of Solar System – 5MWp – Horana

Scope Of Work:

- Total Plant Electrical, Mechanical & Civil Installation works, Testing and Commissioning Works

Type: Ground-mounted Dual-row Single-axis Tracking

Client: Sumathi Energy Company Pvt Ltd



## Improvements to Kiulekada Bedum Ela 014 DCFO area In Huruluwewa Scheme under Rehabilitation of Irrigation System Huruluwewa Division

Scope Of Work:

- Construction of canal lining for D3 canal in Issanwewa from 0+000km to 0+425km in Yan Oya reservoir project under Yan Oya RE's office.

Client: Office of the Director of Irrigation – Anuradhapura



## New Royal Electricals (Pvt) Ltd Head Office Building

### Scope Of Work:

- Design & Build NRE Office Premises.
- Total Civil Works.



## Royal Bio Extraction (Pvt) Ltd Head Office & Manufacturing Plant

### Scope Of Work:

- Design & Build NRE Office Premises.
- Total Civil Works.



## Kappalthurai Grid Substation Circuit Bungalow

### Scope Of Work:

- Foundation, Concreting, plastering & etc.
- Structural steel fabrication, Galvanization, installation and painting (Chequered plate, manhole covers, ladders and etc.)
- Roofing – valance board, eve ceiling & down pipe completion.
- Water supply – Plumbing & sanitary.
- Waste water & Sewerage – Manhole, Septic tank, soak pit & pipe connection.
- Design, approval, supply and installation of furniture.
- Total Work on Swimming pool.
- Design, approval, supply and installation of furniture with Kitchen utensils.
- Landscaping & tree plantation, drain, pavements & etc.
- Total Civil Works.



## 220Kv Switching Station at Kerwalapitiya

### Scope Of Work:

- Steel Roof Structure Fabrications & Installation of roofing, gutters, flashing and accessories.
- Design, Supply, Fabrication, Galvanizing, Painting & Installation works of Handrail, Spiral staircase, Water tank Roof.
- Supply & Installation of Aluminum Doors & Windows, Electrically operated Rolling Shutter and Fire Proof Doors.
- Supply & Installation of Raised Floor for Control room building.
- Supply & Installation of Insert Plates and Wired Glass including Curtains, Solar Lamination.
- Supply & Installation of Exhaust Fan and Louvers.
- Earthing & Lightning Protection Works
- Supply & Installation Water supply & Sanitary System.
- Total Civil Works.



## Rangiri Dambulla International Stadium

Scope Of Work:

- Construction of 06 nos Mass Light Foundation and 06 Nos of Control Room Buildings
- Total Civil Works.



## Construction of Three -storey building in Kurunegala

Scope Of Work:

- Foundation, Concreting, plastering & etc.
- Structural steel fabrication, Galvanization, installation and painting.
- Roofing - valance board, eve ceiling & down pipe completion.
- Water supply - Plumbing & sanitary.
- Waste water & Sewerage - Manhole, Septic tank, soak pit & pipe connection.
- Landscaping & tree plantation, drain, pavements & etc.
- Total Civil Works.



## Construction of tower foundations at Kothmale - New Polpitiya 220/132kV four circuit transmission line

Scope Of Work:

- Total foundation construction Associated retaining walls, line drains construction.
- Total Civil Works.



## Uga Halloowella

Scope Of Work:

- Total LV & ELV Work.

Client: UGA ESCAPES MANAGEMENT (PVT) LTD



## Colombo Port City Development Project

### Scope Of Work:

- Installation of Substations equipment and cabling work including;
- Installation of 220/33kv Grid Substation-R1.
- 220kv Cable Laying Between Colombo port L Grid Substations to Port city R1 grid Substation.
- 33kv Cable Laying from R1 grid Substation to Land Plots.



## Stringing Of Conductors And Opgw - Lot S1 - 17.3Km Under The Construction Of Kothmale - New Polpitiya 220/132Kv Four Circuit Transmission Line - Stringing, sagging, clipping and clamping

### Scope Of Work:

- Stringing of 16.2km LL-Zebra conductors, including two OPGW in 220kv/132kv four circuit Transmission line from Kotmale to New Polpitiya
- Stringing of 0.4km of Double Circuit 132kv transmission line including three OPGW from Moragolla Power station to Tower No. KBY-50.
- Stringing of 0.7km of Double Circuit 132kv Transmission Line from Nawalapitiya GSS to Tower No. FC-24 including two OPGW.



## Construction of Electrical Equipment warehouse - Lakvijaya Power Plant

### Scope Of Work:

- Supply, Installation and commissioning (Including Load test) of the 7.5 Ton overhead cranes
- Structural steel fabrication, Galvanization, installation and painting.
- Erection of steel structure, roof, wall and concrete & masonry work with other finishing work, including electrical & mechanical installations.
- Total Civil Works.



## R Premadasa International Stadium

### Scope Of Work:

- Construction of 06 nos Mass Light Foundation and 06 Nos of Control Room Buildings
- Total Civil Works.



## Stringing of conductors of 33kV Double Circuit LYNX line from Morawaka Gantry- Warukandeniya Gantry.(17 km)

Scope Of Work:

- Stringing of conductors of 33kV Double Circuit LYNX line from Morawaka Gantry- Warukandeniya Gantry.(17 km)



## Stringing of conductors of 33kV Double Circuit LYNX line from Elpitiya GSS - Mattaka Gantry.(10 km)

Scope Of Work:

- Stringing of conductors of 33kV Double Circuit LYNX line from Elpitiya GSS - Mattaka Gantry. (10 km)



## Construction of Tower Foundation, Tower Erection works at 33kV DC Lynx Tower Line from Vavunathivu Grid Substation to Kaluwanchikudy Gantry (T81, T82,T83).

Scope Of Work:

- Construction of Tower Foundation, Tower Erection works at 33kV DC Lynx Tower Line from Vavunathivu Grid Substation to Kaluwanchikudy Gantry (T81, T82,T83)



## Construction of Concrete Pad & Chimney Foundations for 17 Nos. of Tower Locations Lot F2 Sub Lot B - 09 Nos., under the Construction of Dambulla- New Habarana 220/132kv Four Circuit Transmission Line

Scope Of Work:

- Construction of Concrete Pad & Chimney Foundations for 17 Nos. of Tower Locations Lot F2 Sub Lot B - 09 Nos., under the Construction of Dambulla- New Habarana 220/132kv Four Circuit Transmission Line



### **Address**



259/1, Dalupitiya Road, Hunupitiya  
Wattala Sri Lanka



### **Email**

info@nregroup.lk

### **Telephone**



(94) 76 783 5338, (94) 77 303 5338



### **Fax**

(94) 11 2938428



### **Website**

[www.nregroup.lk](http://www.nregroup.lk)